

MDA's MOVR Data Hub provides insights into adoption of approved therapies for neuromuscular disease



Elisabeth A Kilroy, PhD¹, Jessica Waits¹, Sharon Hesterlee, PhD¹
¹ Muscular Dystrophy Association, 161 N. Clark, Suite 3550, Chicago, IL 60601

Abstract

The field of neuromuscular disease (NMD) research is experiencing tremendous growth as a result of progress in both diagnostics and therapeutics. However, there continues to be a critical data shortage, as data regarding disease progression have not been captured systematically across NMDs nor in centralized, accessible databases. The **neuroMuscular ObserVational Research Data Hub (MOVR)** was created by the Muscular Dystrophy Association (MDA) to accelerate data collection, maximize drug development, and enhance the impact of new therapies. MOVR is powered by the MDA Care Center network, which consists of over 150 multidisciplinary care centers across the United States. Currently, 60 care centers have activated the MOVR Study Protocol and data from 3,948 participants and 12,376 encounters have been captured in MOVR. Preliminary analyses of MOVR Data have been performed to characterize the use FDA-approved therapies by participants living with spinal muscular atrophy (SMA), amyotrophic lateral sclerosis (ALS), or Duchenne muscular dystrophy (DMD). For participants living with SMA, the method of diagnosis (i.e., newborn screening, symptom onset) influences the type of therapy used and the age at which therapy is initiated. For participants living with ALS, over 75 percent of participants use an FDA-approved therapy, and these therapies are initiated on average less than 6 months after diagnosis. For participants living with DMD, the use of exon-skipping therapy is relatively limited among those participants who have mutations amenable to these therapies, with only 38 percent of participants receiving therapy. Future analyses will be performed to understand how these therapies may be impacting other core data elements captured by MOVR, including medication usage, multidisciplinary referral types, and functional measures. As the first data hub to aggregate clinical and genetic data across multiple NMDs, **MOVR continues to demonstrate its ability to transform the NMD space by serving as a powerful tool for clinical trial matching, clinical trial design and feasibility, and as a source for real-world data for pre- and post-approval submissions.**

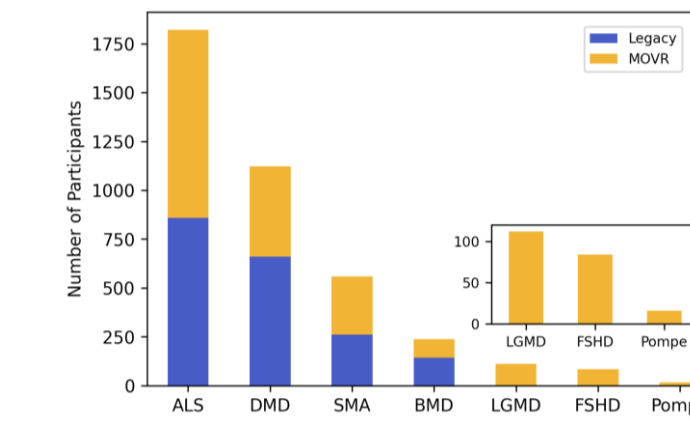
MOVR as a Centralized Data Hub

About 10 years ago, MDA recognized that there was a significant data shortage in the NMD space and started crafting strategic approaches to accelerate data collection and its use by researchers, clinicians, and drug developers. One strategy that was identified was to leverage the MDA Care Center Network as a source for efficiently capturing clinical data and growing a longitudinal dataset. Each year, over 90,000 medical visits are conducted and over 60,000 individuals living with NMDs receive expert care at these centers.

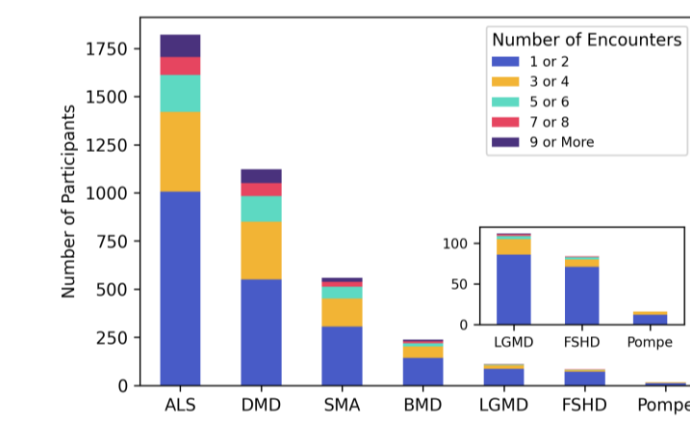
60 Active MOVR Sites



3,948 Participants



12,376 Encounters



Data elements captured by MOVR are functional and disease-specific outcome measures that have been identified by KOLs as important to understanding disease mechanisms, tracking disease progression, and implementing standards of care.

31

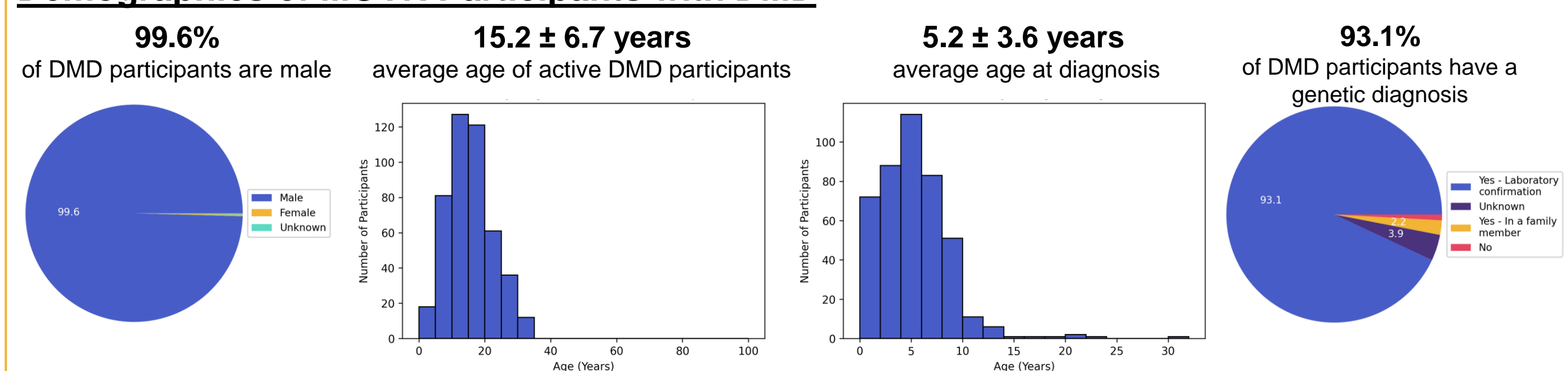
core data elements captured by the electronic Case Report Forms (eCRFs)

Demographics eCRF [*] (During Enrollment)	Diagnosis eCRF [*] (During Enrollment)	Encounter eCRF [*] (During Clinical Visits)	Discontinuation eCRF [*] (After End of Study)
Disease Type Enrollment Date Gender DOB Race Ethnicity Insurance Education Employment	Age at Diagnosis Age at Symptom Onset Clinical Diagnosis First Symptoms Family History Genetic Testing Results	Encounter Date Height Weight Clinical Trial Participation Surgeries Hospitalizations Medications Pulmonary Devices Assistive Devices Functional Testing Pulmonary Tests Referral Types	Date of Discontinuation Reason for Discontinuation Date of Death Cause of Death

* Diagnosis and Encounter eCRFs contain additional unique fields for each indication.

Approved Therapy Use in DMD Participants

Demographics of MOVR Participants with DMD

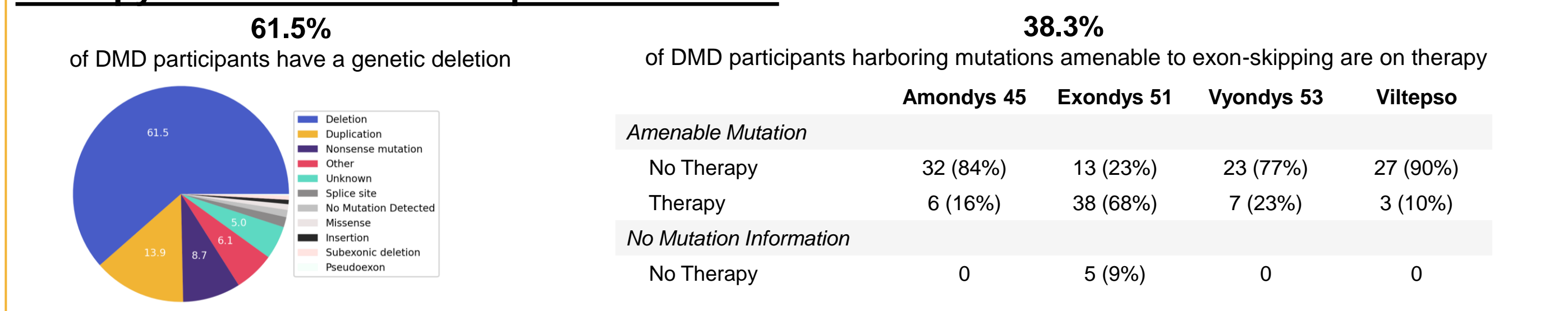


DMD Therapeutic Approval Timeline

There are 4 exon-skipping therapies approved by the FDA for individuals living with DMD.

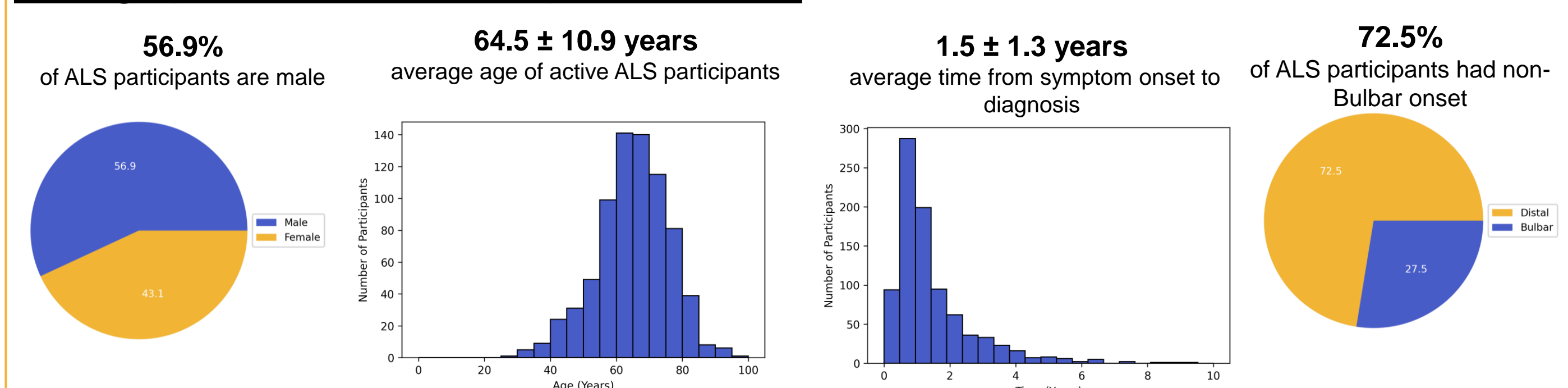


Therapy Use in MOVR Participants with DMD



Approved Therapy Use in ALS Participants

Demographics of MOVR Participants with ALS

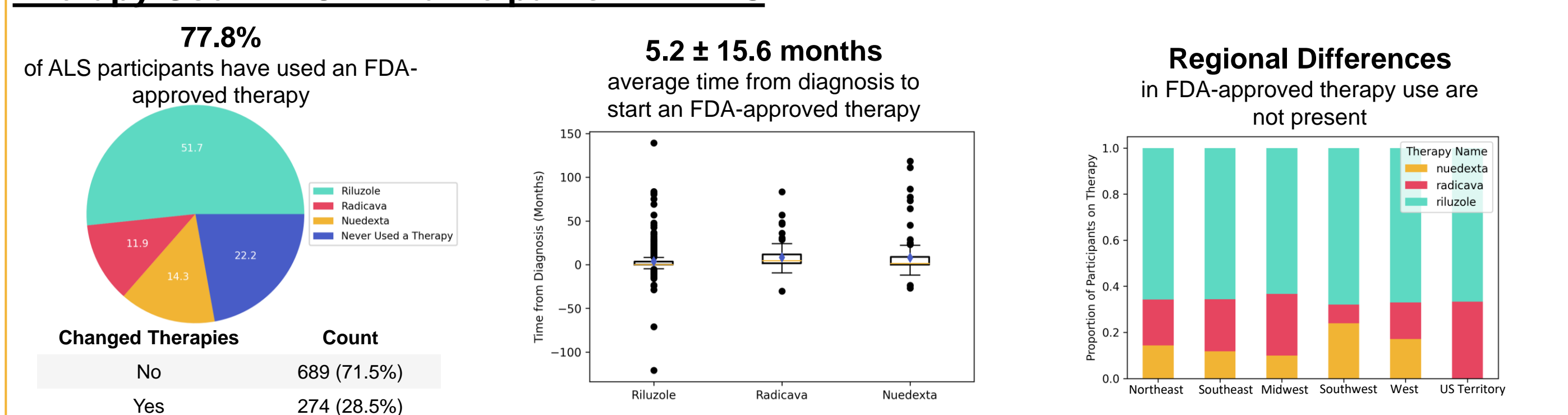


ALS Therapeutic Approval Timeline

There are 5 therapies approved by the FDA for individuals living with ALS.

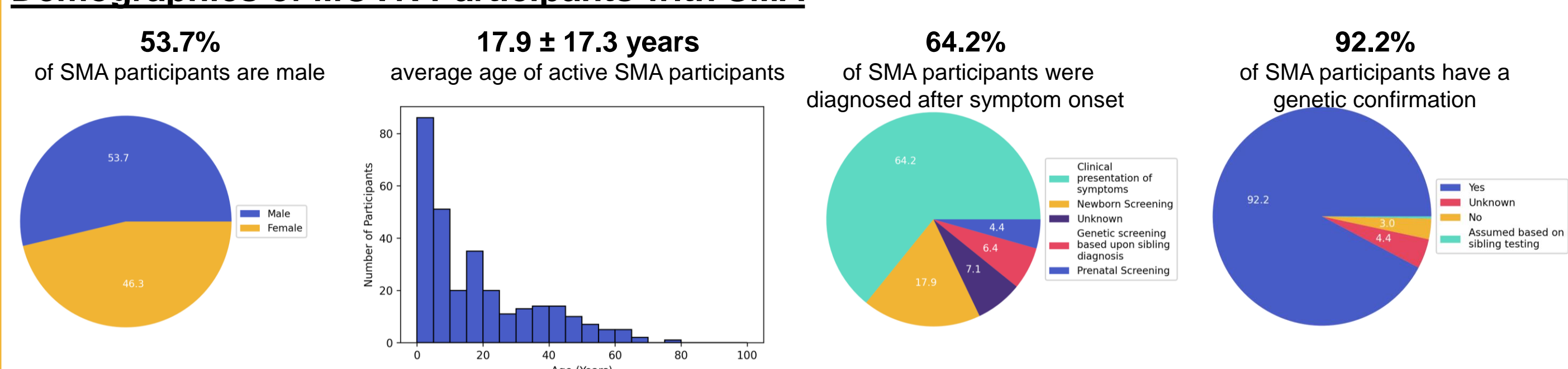


Therapy Use in MOVR Participants with ALS



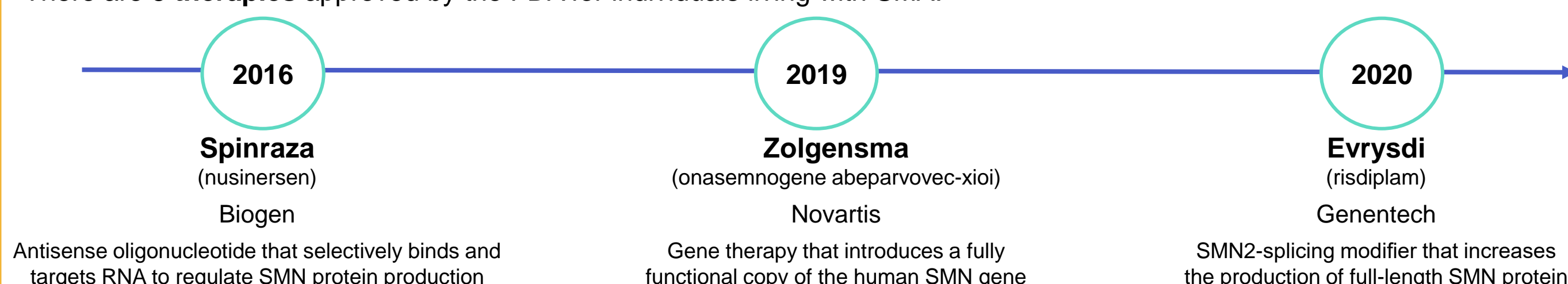
Approved Therapy Use in SMA Participants

Demographics of MOVR Participants with SMA

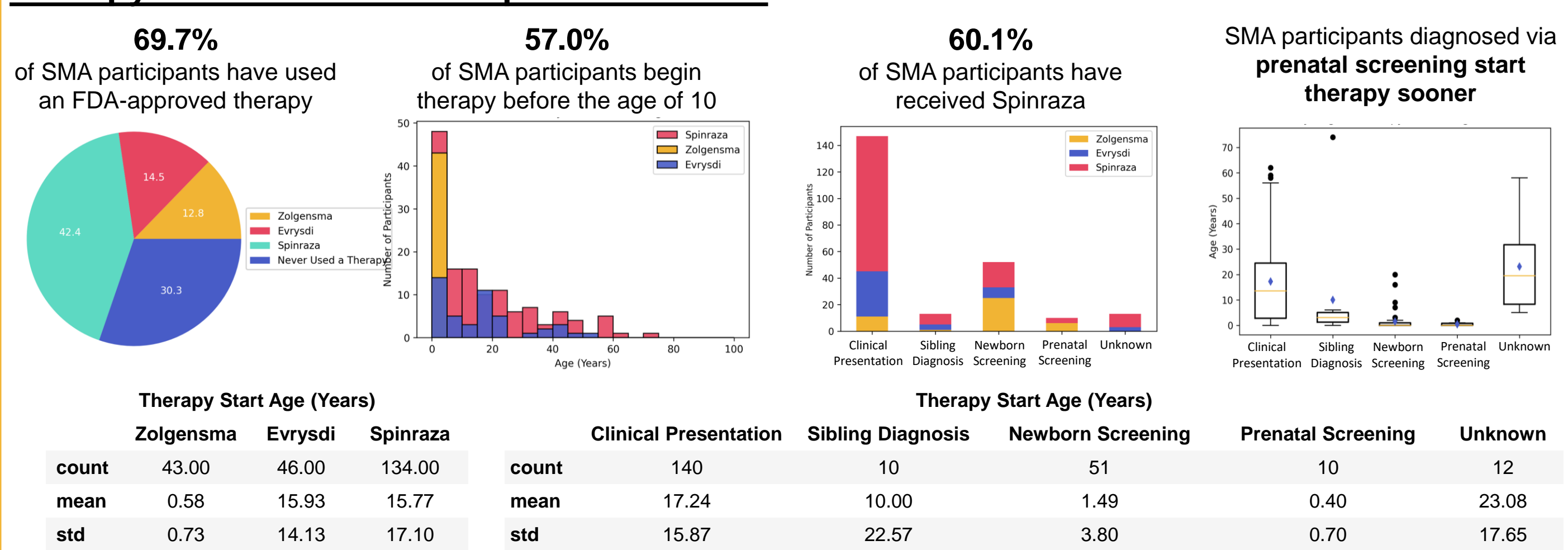


SMA Therapeutic Approval Timeline

There are 3 therapies approved by the FDA for individuals living with SMA.



Therapy Use in MOVR Participants with SMA



Conclusions

The MOVR Data Hub is experiencing tremendous growth in the number of participants enrolled in this observational study as well as in the number of longitudinal clinical encounters. Standardization of data elements across the 7 indications provides MOVR with the ability to examine the same outcome measures across time. For these analyses, we examined the use of FDA-approved therapies in MOVR Participants living with DMD, SMA, and ALS. The majority of ALS and SMA participants are receiving (or have received) an FDA-approved therapy but relatively few DMD participants have received a therapy. Building these two cohorts (therapy vs therapy-naïve) provides an opportunity to explore how therapies impact disease progression as well as standard of care practices. The MOVR Data Hub is a valuable tool for monitoring longitudinal response to therapies and could serve as an excellent source for real-world efficacy data for future regulatory submissions.

Contact the MOVR Team

Sharon Hesterlee, PhD
EVP & Chief Research Officer
shesterlee@mداusa.org

Elisabeth Kilroy, PhD
MOVR Data Analytics
ekilroy@mداusa.org

Jessica Waits
MOVR Clinical Operations
jwaits@mداusa.org

Acknowledgements

This study was conducted using data from the Muscular Dystrophy Association's neuroMuscular ObserVational Research (MOVR) Data Hub. MOVR is operated through participating MDA Care Centers with the support of participants, MOVR Site PIs, coordinators, and staff. The authors would also like to thank members of the MOVR Research Advisory Committee, including James Berry, Barry Byrne, John Day, Rod Howell, Monkol Lek, Nicholas Maragakis, and Sabrina Paganoni, for sharing their expertise in neuromuscular diseases, the original MDA team members who spear-headed the development of the MOVR eCRFs, including Grace Pavlath, Lianna Orlando, Amanda Hayden-Phillips, and Laura Hagerty, and Tracy Blumenfeld for her contributions in launching MOVR. Finally, the authors would like to thank the teams at IQVIA and DNAnexus.